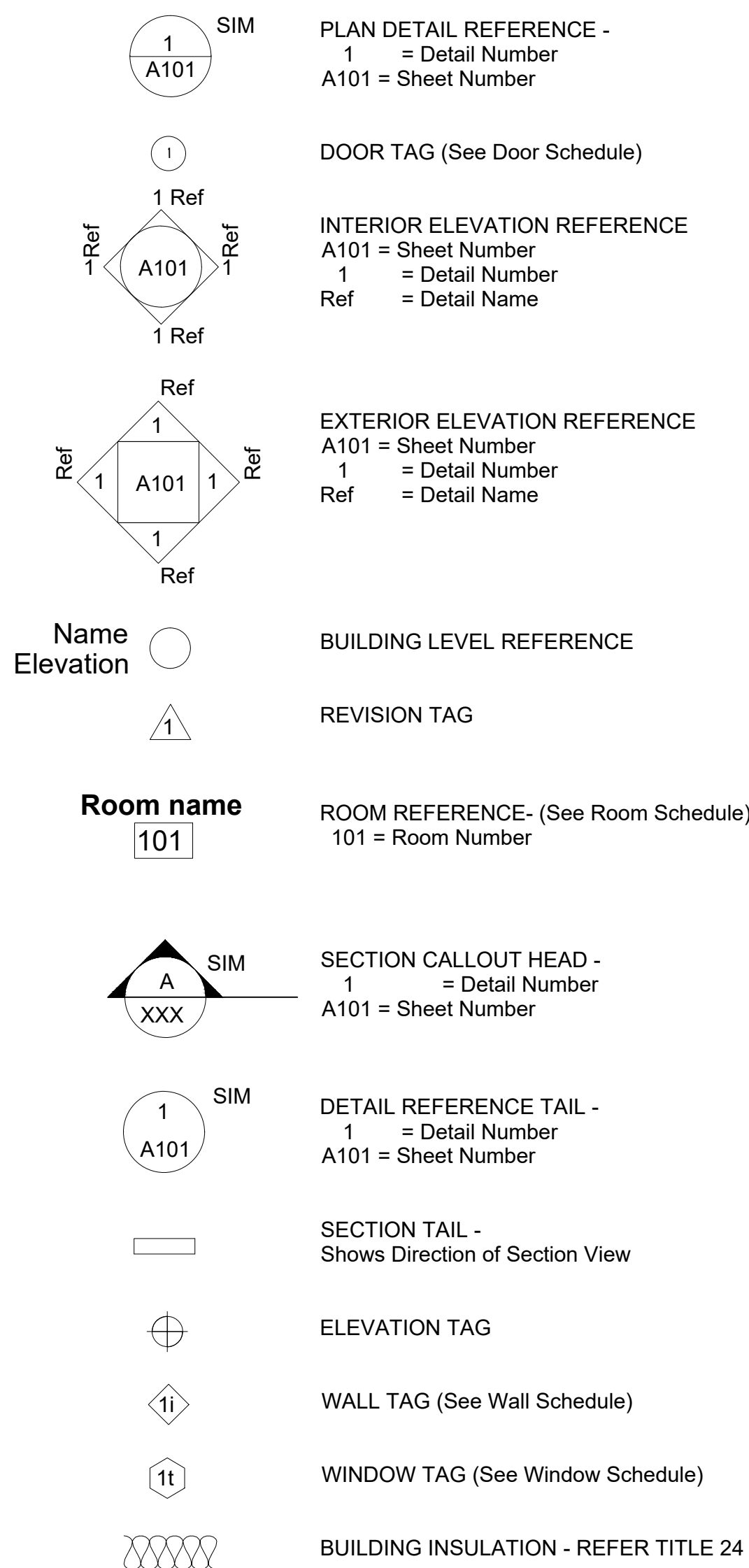
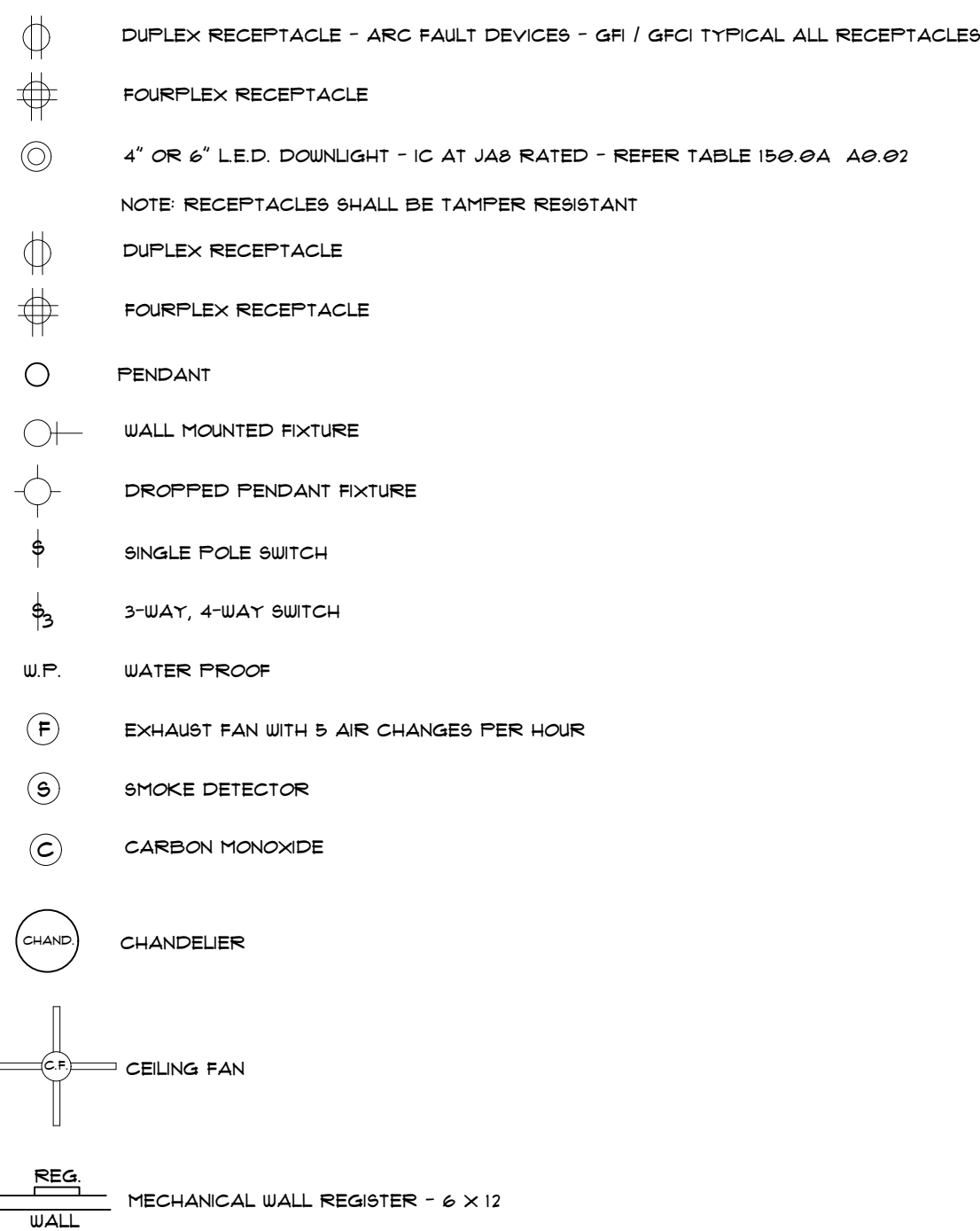


**SYMBOLS**

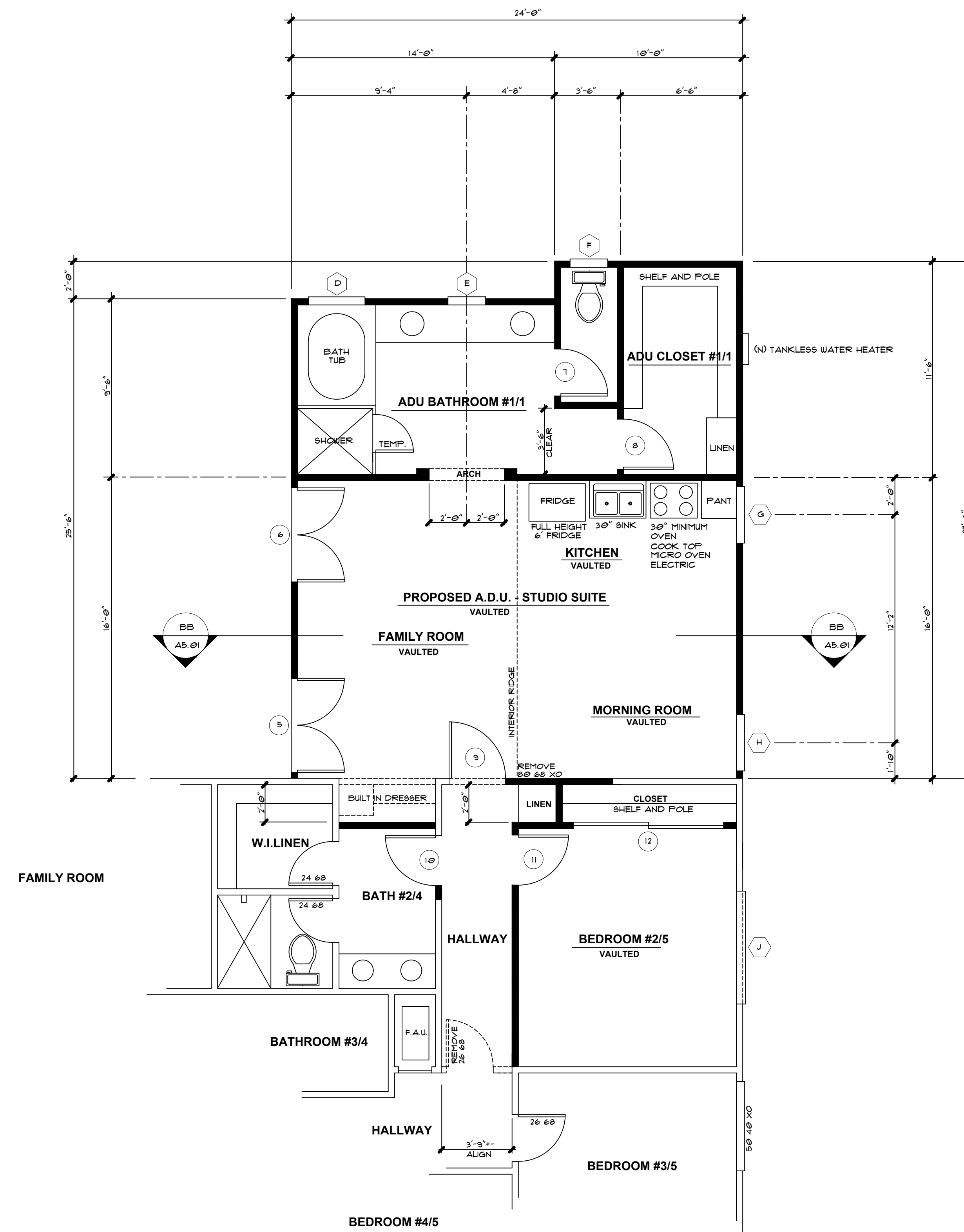
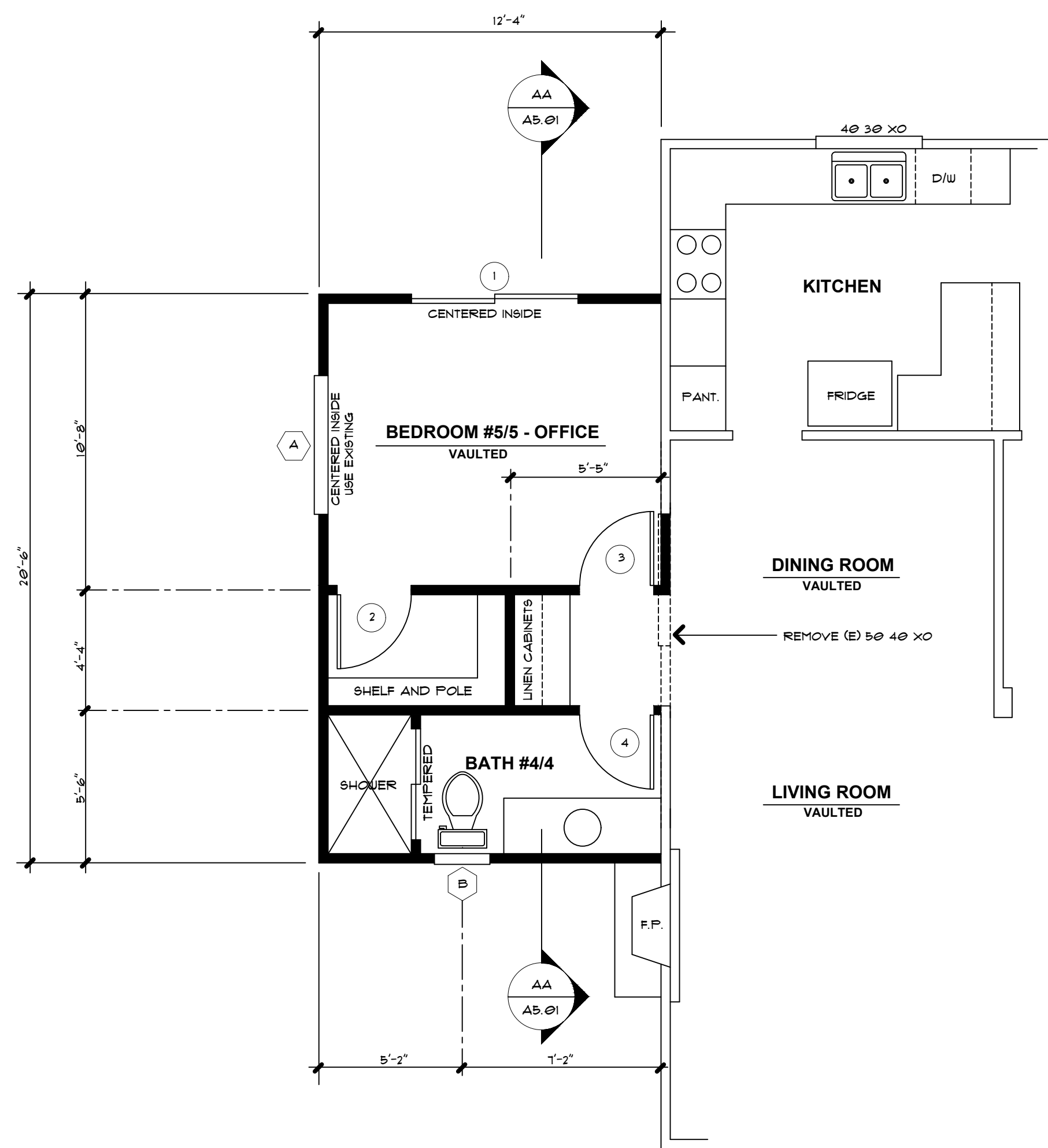
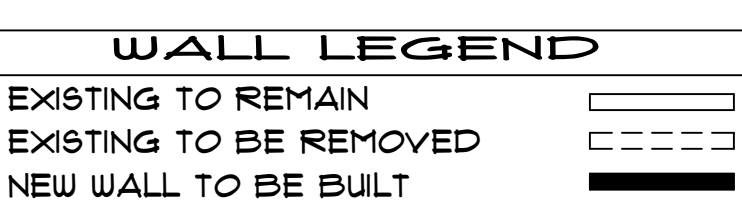


**ELECTRICAL LEGEND**

NOTE: RECEPTACLES SHALL BE TAMPER RESISTANT

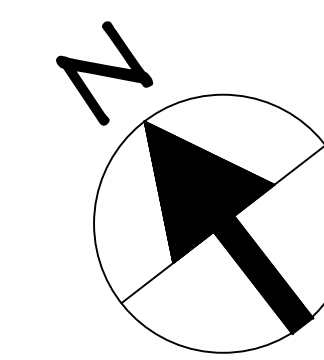


NOTE: ALL ELECTRICAL IS SCHEMATIC AND NOT NECESSARILY EXACT. ELECTRICAL CONTRACTOR SHALL REVIEW ALL ELECTRICAL WITH OWNERS PRIOR TO INSTALLATION. MECHANICAL - CONNECT TO EXISTING DUCTING. REFER TO FLOOR PLAN AS INDICATED ABOVE DOORS



**EXISTING / DEMOLITION / PROPOSED FIRST FLOOR PLAN**

SCALE: 1/4" = 1'-0"

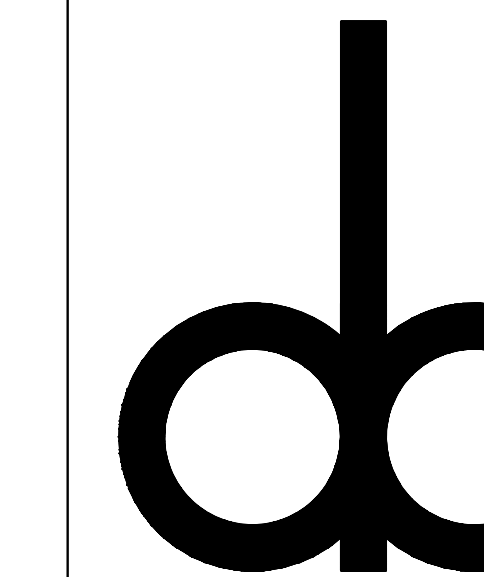


REVISIONS	BY
△	DCF
△	DCF
△	DCF

ASSOCIATE MEMBER OF AMERICAN INSTITUTE OF ARCHITECTS

D.C.FOOTE - ASSOCIATE AIA

DATE



D.C.FOOTE, INCORPORATED  
 501 MOBIL AVENUE, SUITE A  
 CAMARILLO, CALIFORNIA 93010  
 CELL: (805) 444-1230  
 DCFOOTE@DCFOOTE.COM  
 WWW.DCFOOTE.COM

SHEET TITLE  
**EXTERIOR ELEVATIONS**

PROJECT TITLE  
**PROPOSED A.D.U. / ADDITION FOR:  
 CAMARILLO, CALIFORNIA**

JOB NUMBER  
 128621C02

DRAWN BY: D.C.FOOTE

CHECKED: JDF

DATE: MARCH 10, 2022

SCALE: NOTED

SHEET

**A4.01**

**DESIGNED BY: D.C. FOOTE, INCORPORATED (805) 444-1230 dcfoote@dcfoote.com**