

| SYMBOLS | |
|---------|---|
| | PLAN DETAIL REFERENCE - 1 = Detail Number A101 = Sheet Number |
| | DOOR TAG (See Door Schedule) |
| | INTERIOR ELEVATION REFERENCE A101 = Sheet Number 1 = Detail Number Ref = Detail Name |
| | EXTERIOR ELEVATION REFERENCE A101 = Sheet Number 1 = Detail Number Ref = Detail Name |
| | BUILDING LEVEL REFERENCE |
| | REVISION TAG |
| | ROOM REFERENCE - (See Room Schedule) 101 = Room Number |
| | SECTION CALLOUT HEAD - 1 = Detail Number A101 = Sheet Number |
| | DETAIL REFERENCE TAIL - 1 = Detail Number A101 = Sheet Number |
| | SECTION TAIL - Shows Direction of Section View |
| | ELEVATION TAG |
| | WALL TAG (See Wall Schedule) |
| | WINDOW TAG (See Window Schedule) |
| | BUILDING INSULATION - REFER TITLE 24 |

ELECTRICAL LEGEND

- DUPLEX RECEPTACLE - ARC FAULT DEVICES - GFI / GFCI TYPICAL ALL RECEPTACLES
- FOURPLEX RECEPTACLE
- 4" OR 6" LED DOWNLIGHT - IC AT JAB RATED - REFER TABLE 15-9 @ A4.01

- WALL MOUNTED FIXTURE
- DROPPED PENDANT FIXTURE
- SINGLE POLE SWITCH
- 3-WAY, 4-WAY SWITCH
- WATER PROOF
- EXHAUST FAN WITH 5 AIR CHANGES PER HOUR
- SMOKE DETECTOR
- CARBON MONOXIDE

- CEILING FAN

- MECHANICAL WALL REGISTER - 6" X 12"

- HANGING LIGHT FIXTURE

NOTE: ALL ELECTRICAL IS SCHEMATIC AND NOT NECESSARILY EXACT. ELECTRICAL CONTRACTOR SHALL REVIEW ALL ELECTRICAL WITH OWNERS PRIOR TO INSTALLATION. MECHANICAL - CONNECT TO EXISTING DUCTING. REFER TO FLOOR PLAN AS INDICATED ABOVE DOORS.

| WALL LEGEND | |
|-------------|------------------------|
| | EXISTING TO REMAIN |
| | EXISTING TO BE REMOVED |
| | NEW WALL TO BE BUILT |

NOTE: MANDATORY REQUIREMENTS FOR LIGHTING ON THE PLAN. ALL LIGHTING SHALL BE HIGH EFFICACY. SCREW BASED LUMINAIRES MUST CONTAIN LAMPS LISTED AS JAB-2016 CERTIFIED. LIGHTING IN BATHROOM, GARAGE, LAUNDRY ROOM, UTILITY ROOM SHALL BE HIGH EFFICACY AND EQUIPPED WITH OCCUPANT SENSOR. NOTE: UNDER CABINET LIGHTING SHALL BE SWITCHED SEPARATELY FROM OTHER SYSTEMS. NOTE: EXTERIOR LIGHTING MOUNTED ON THE BUILDING TO BE HIGH EFFICACY AND CONTROLLED BY PHOTO CONTROL/MOTION SENSOR COMBINATION. LIGHTS IN EXHAUST FANS SHALL BE HIGH EFFICACY. LIGHTS RECEIVED IN INSULATED CEILING MUST BE IC RATED, PIN BASED, LISTED AS AIR TIGHT, AND SEALED WITH A GASKET. LIGHT BULBS SHALL BE JAB-2016-E CERTIFIED. ALL HIGH EFFICACY LIGHTS MUST BE CERTIFIED TO THE ENERGY COMMISSION ACCORDING TO JAB. NOTE: INSULATE ALL NOT ACCESSIBLE WATER PIPING. INSULATE PIPING WITHIN 5 FEET OF WATER HEATER. INSULATE ALL PIPING WITH A NOMINAL DIAMETER OF 3/4" INCH. NOTE: EXTERIOR LIGHTING MOUNTED ON THE BUILDING TO BE HIGH EFFICACY AND CONTROLLED BY PHOTO CONTROL/MOTION SENSOR COMBINATION. NOTE: EXTERIOR LIGHTING MOUNTED ON THE BUILDING TO BE HIGH EFFICACY AND CONTROLLED BY PHOTO CONTROL/MOTION SENSOR COMBINATION. LIGHTING IN BATHROOM SHALL BE HIGH EFFICACY AND EQUIPPED WITH OCCUPANT SENSOR. THE NUMBER OF BLANK ELECTRICAL BOXES MORE THAN 9 FEET ABOVE THE FLOOR ARE LIMITED TO THE NUMBER OF BEDROOMS. THEY SHALL BE SERVED WITH A DIMMER OR VACANCY SENSOR. MAXIMUM FLOOR RATE STANDARDS SET BY CPC AND CITY ORDINANCE. WATER CLOSETS DUAL FLUSH (6.1" 1.28 GPF) URINALS @ 0.25 GPF, LAVATORY FAUCETS 1.2 GPF, SHOWERS @ 2.0 GPF AND KITCHEN FAUCETS 1.8 GPF. INSTALLED ISOLATION VALVES ON THE HOT AND COLD WATER LINES AT INSTANTANEOUS WATER HEATERS. INSULATE ALL NOT ACCESSIBLE WATER PIPING. PROVIDE MECHANICAL VENTILATION FOR BATHROOMS AND LAUNDRY ROOMS. ALL 120-VOLT, SINGLE PHASE, 15 AND 20 AMPERE BRANCH CIRCUITS IN KITCHEN, FAMILY ROOMS, DINING ROOMS, LIVING ROOMS, PARLORS, LIBRARIES, DEN, BEDROOMS, BUNKROOMS, RECREATION ROOMS, CLOSETS, HALLWAYS, LAUNDRY ROOMS OR SIMILAR ROOMS OR AREAS SHALL BE PROTECTED BY A LISTED ARC-FAULT CIRCUIT INTERRUPTER, COMBINATION-TYPE (CEC 240.12).

NOTE: THE DISCHARGE OF POLLUTANTS TO ANY STORM DRAINAGE SYSTEM IS PROHIBITED PER THE VENTURA COUNTYWIDE MUNICIPAL STORM WATER NPDES PERMIT NUMBER CAG0004002. NO SOLID WASTE, PETROLEUM BY-PRODUCTS, SOIL, PARTICULATE, CONSTRUCTION WASTE MATERIALS, OR WASTEWATER OR WASTEWATER GENERATED ON CONSTRUCTION SITES OR BY THE CONSTRUCTION ACTIVITIES SHALL BE PLACED, CONVEYED OR DISCHARGED INTO THE STREET, GUTTER OR STORM DRAIN SYSTEM.

NOTE: INSTALL SMOKE DETECTORS IN ALL SLEEPING ROOMS AND HALLWAY AS NOTED PER PLAN. SMOKE DETECTORS SHALL NOT BE LOCATED MORE THAN 5 FEET HORIZONTALLY FROM THE DOOR OR OPENING. SMOKE DETECTORS SHALL BE HARDWIRED AND INTERCONNECTED WHEREAS WHEN ONE ALARM GOES OFF, THEY ARE ALL ACTIVATED. SMOKE ALARMS SHALL HAVE A 10 YEAR BATTERY BACK-UP. PROVIDE ONE CARBON MONOXIDE DETECTOR IN HALLWAY PER PLAN. CARBON MONOXIDE DETECTOR SHALL HAVE A 10 YEAR BATTERY BACK-UP.

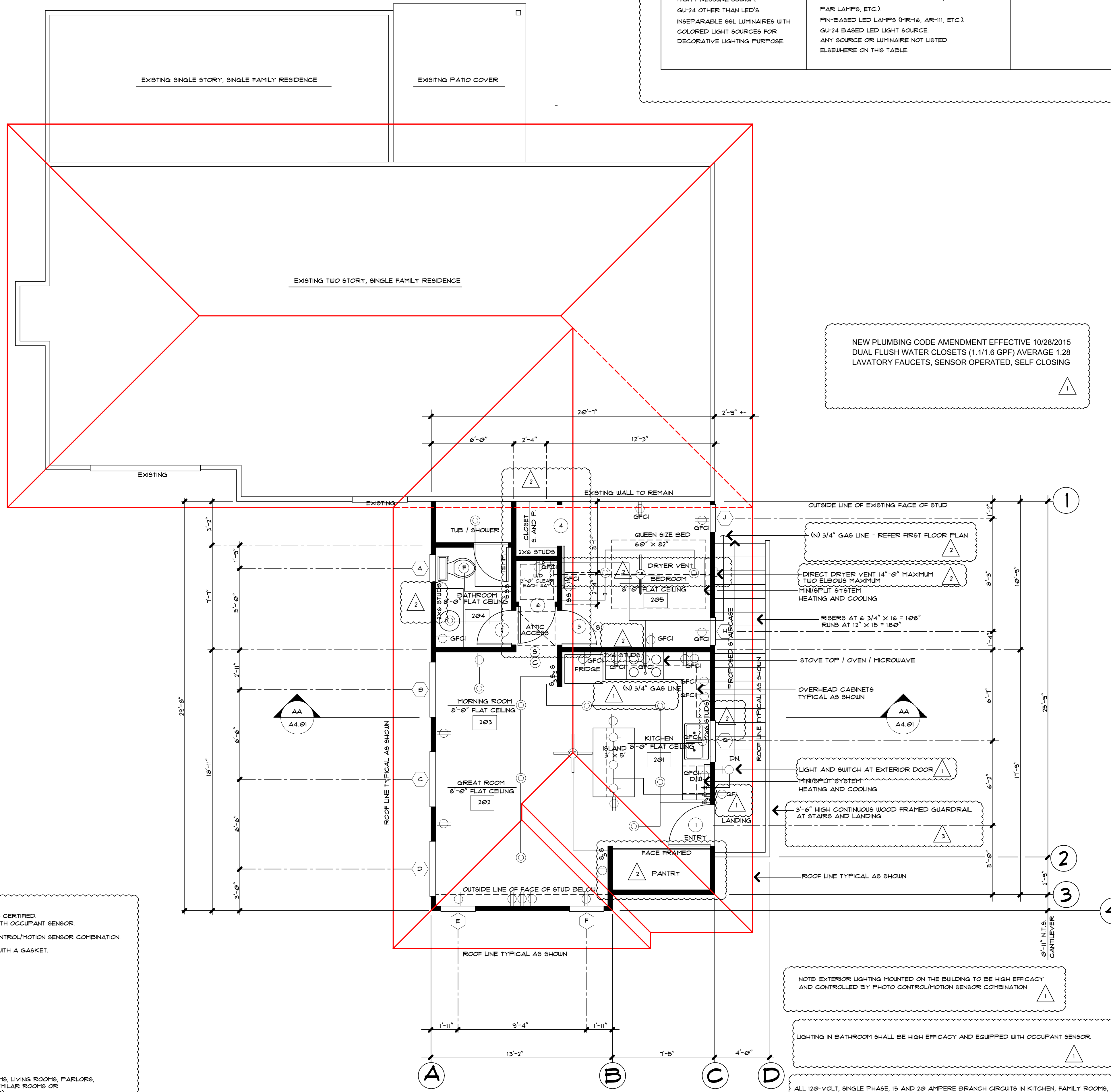
NOTE: EXTERIOR LATH PROVIDE TWO LAYERS OF GRADE "D" PAPER OVER ALL WOOD BASE SHEATHING. LAYERS SHALL BE INSTALLED INDEPENDENTLY (R103.13). PROVIDE A KEEL SOURED FOR STUCCO AT THE FOUNDATION PLATE LINE A MINIMUM OF 4 INCHES ABOVE EARTH OR 1 INCHES ABOVE FINISHED AREAS (R103.12.1).

NOTE: MOSE BISS SHALL BE INSTALLED WITH ANTI-SIPHON VALVES.

NOTE: SHOWER COMPARTMENTS AND WALLS ABOVE BATHTUBS WITH SHOWER HEADS SHALL BE FINISHED WITH A SMOOTH, NONABSORBENT SURFACE TO A HEIGHT, NOT LESS THAN 6 FEET ABOVE FLOOR (R30.2).

NOTE: PROVIDE MECHANICAL VENTILATION FOR BATHROOMS AND LAUNDRY ROOMS.

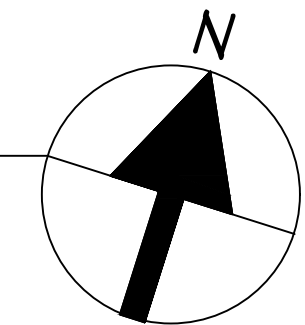
| TABLE 6-1: SUMMARY OF COMPLIANT LUMINAIRE TYPES | | |
|---|--|---|
| HIGH EFFICACY LUMINAIRES | JAB HIGH EFFICACY LIGHTING LAMPS AND LIGHT SOURCES THAT MUST BE JAB-CERTIFIED | RECESSED DOWNLIGHTS LUMINAIRES IN CEILING |
| ON-BASED LINEAR FLUORESCENT, PIN-BASED COMPACT FLUORESCENT, FULL-SHAFT METAL HALIDE, HIGH PRESSURE SODIUM, GU-24 OTHER THAN LED'S, INSEPARABLE 86L LUMINAIRES WITH COLORED LIGHT SOURCES FOR DECORATIVE LIGHTING PURPOSE. | LIGHT SOURCES IN CEILING RECESSED DOWNLIGHT LUMINAIRE SHALL CONTAIN JAB-CERTIFIED LIGHT SOURCES. LED LUMINAIRE WITH INTEGRAL SOURCES. SCREW-BASED LED LAMPS (A-LAMPS, PAR LAMPS, ETC.). PIN-BASED LED LAMPS (MR-16, AR-111, ETC.). GU-24 BASED LED LIGHT SOURCE. ANY SOURCE OR LUMINAIRE NOT LISTED ELSEWHERE ON THIS TABLE. | SHALL NOT HAVE SCREW BASED SOCKETS. SHALL MEET ALL PERFORMANCE REQUIREMENTS IN 15-9 (K) IC. |



640 SQUARE FEET

PROPOSED SECOND FLOOR / ROOF PLAN

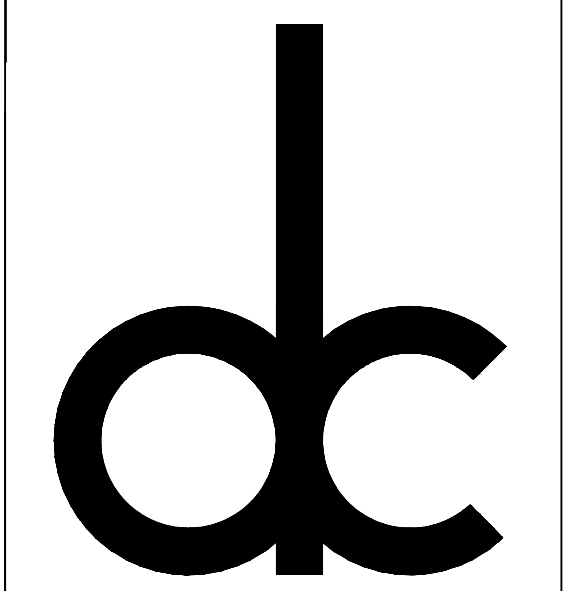
SCALE: 1/4" = 1'-0"



| REVISIONS | BY |
|-----------|-----------------|
| | P.C.C. |
| | P.C.C. #2 |
| | OWNER'S CHANGES |

ASSOCIATE MEMBER OF
AMERICAN INSTITUTE OF ARCHITECTS

D.C.FOOTE - ASSOCIATE AIA



CELL: (805) 444-1230
OFFICE: (805) 482-0091
TOLL FREE: (888) DCFOOTE
FAX: (805) 482-5125
DCFOOTE@DCFOOTE.COM

D.C.FOOTE AND ASSOCIATES
501 MOBIL AVENUE, SUITE A
CAMARILLO, CALIFORNIA 93010
PHONE (888) DCFOOTE
DCFOOTE@DCFOOTE.COM
WWW.DCFOOTE.COM

SHEET TITLE
PROPOSED SECOND FLOOR PLAN

PROJECT TITLE
**PROPOSED ADU ADDITION FOR:
CAMARILLO, CALIFORNIA**

JOB NUMBER
124819

DRAWN BY: D.C.FOOTE

CHECKED: JDF

DATE: JULY 21, 2019

SCALE: NOTED

SHEET

A3.02